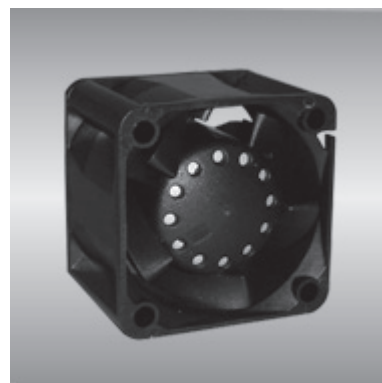


38 AG series

x38x28mm



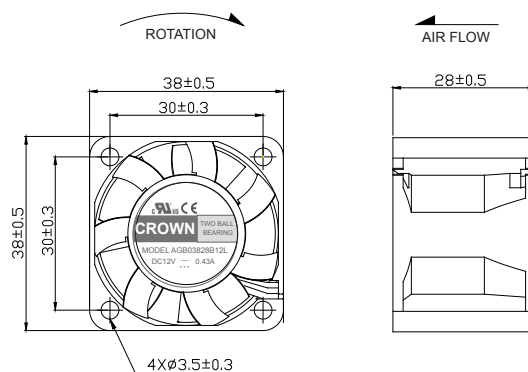
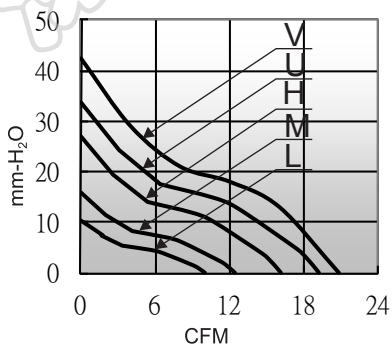
General Specifications

- Motor : 4 Poles brushless DC motor
- Frame & Impeller : Plastic(UL 94V-0)
- Storage temperature : -40° to +75°
- Operating temperature : -10° to +70°

Major Characteristic Parameters

| Model | *Bearing System | Rated Voltage | Operating Voltage Range | Rated Current | Rated Speed | Maximum Air Flow | | Maximum Static Pressure | | Sound Level | Weight |
|--------------|-----------------|---------------|-------------------------|---------------|-------------|------------------|-------|-------------------------|---------------------|-------------|--------|
| Part NO. | B / S / F | V | V | A | RPM | m³/min | CFM | mm-H ₂ O | In-H ₂ O | dBA | g |
| AGB03828_12L | B | 12 | 7.0~13.2 | 0.21 | 8000 | 0.26 | 9.44 | 10.02 | 0.39 | 38.0 | 40 |
| AGB03828_12M | B | 12 | 7.0~13.2 | 0.30 | 10000 | 0.35 | 12.46 | 12.46 | 0.63 | 44.0 | 40 |
| AGB03828_12H | B | 12 | 7.0~13.2 | 0.50 | 13000 | 0.46 | 16.30 | 25.91 | 1.02 | 51.0 | 40 |
| AGB03828_12U | B | 12 | 7.0~13.2 | 0.82 | 15000 | 0.54 | 19.16 | 34.71 | 1.37 | 55.0 | 40 |
| AGB03828_12V | B | 12 | 7.0~13.2 | 1.00 | 17000 | 0.59 | 20.80 | 42.40 | 1.67 | 59.0 | 40 |

*Bearing system B: Two Ball Bearing F: Fluid Bearing S: Sleeve Bearing



unit:mm

38 AG series

x38x28mm



General Specifications

- Motor : 4 Poles brushless DC motor
- Frame & Impeller : Plastic(UL 94V-0)
- Storage temperature : -40° to +75°
- Operating temperature : -10° to +70°

Major Characteristic Parameters

| Model | *Bearing System | Rated Voltage | Operating Voltage Range | Rated Current | Rated Speed | Maximum Air Flow | | Maximum Static Pressure | | Sound Level | Weight |
|--------------|-----------------|---------------|-------------------------|---------------|-------------|---------------------|------|-------------------------|---------------------|-------------|--------|
| Part NO. | B / S / F | V | V | A | RPM | m ³ /min | CFM | mm-H ₂ O | In-H ₂ O | dBA | g |
| AGF03828_12L | B | 12 | 7.0~13.2 | 0.15 | 8000 | 0.242 | 8.6 | 10.6 | 0.42 | 37 | 40 |
| AGF03828_24L | B | 24 | 14.0~26.4 | 0.08 | 8000 | 0.242 | 8.6 | 10.6 | 0.42 | 37 | 40 |
| AGF03828_12M | B | 12 | 7.0~13.2 | 0.25 | 10000 | 0.302 | 10.7 | 16.4 | 0.64 | 42 | 40 |
| AGF03828_24M | B | 24 | 14.0~26.4 | 0.13 | 10000 | 0.302 | 10.7 | 16.4 | 0.64 | 42 | 40 |
| AGF03828_12H | B | 12 | 7.0~13.2 | 0.29 | 11000 | 0.333 | 11.8 | 20.0 | 0.79 | 45 | 40 |
| AGF03828_24H | B | 24 | 14.0~26.4 | 0.25 | 11000 | 0.333 | 11.8 | 20.0 | 0.79 | 45 | 40 |

*Bearing system B: Two Ball Bearing F: Fluid Bearing S: Sleeve Bearing

